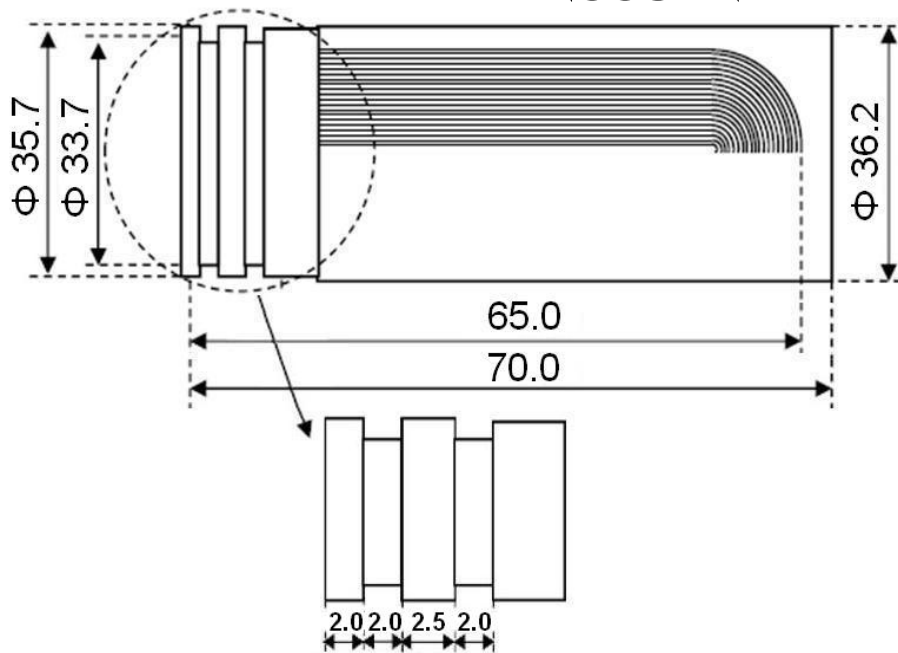


Specifications. & Analytic Results

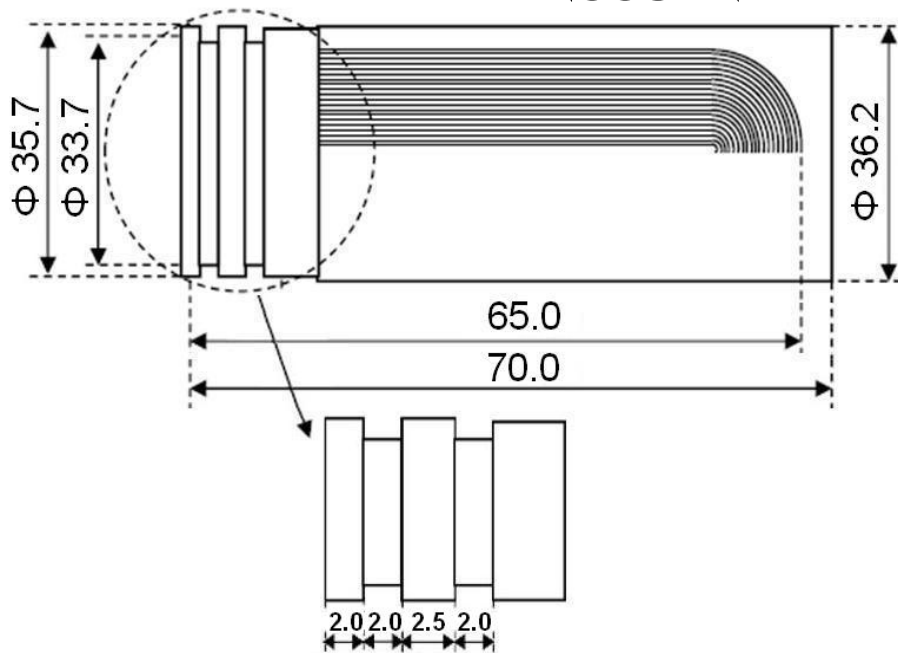
Model No	KO1112-E
Application	NATURAL PRESSURE



Category	Unit	Results	Remark
Main Material	-	Poly Sulfone	-
Initial Flux	cc/min	650	± 100
Surface area	m ²	0.11	± 0.01
Number of Fibers	Filas.	1,200	U-Type
Outer Diameter	μm	460	± 40
Inner Diameter	μm	300	± 40
Pore Size	μm	0.01~ 0.1	-
Lp (Liquid permeability)	cc/cm ² · min · (kg/cm ²)	40	± 5
Work Pressure	kg/cm ²	at Gravity	-

Specifications. & Analytic Results

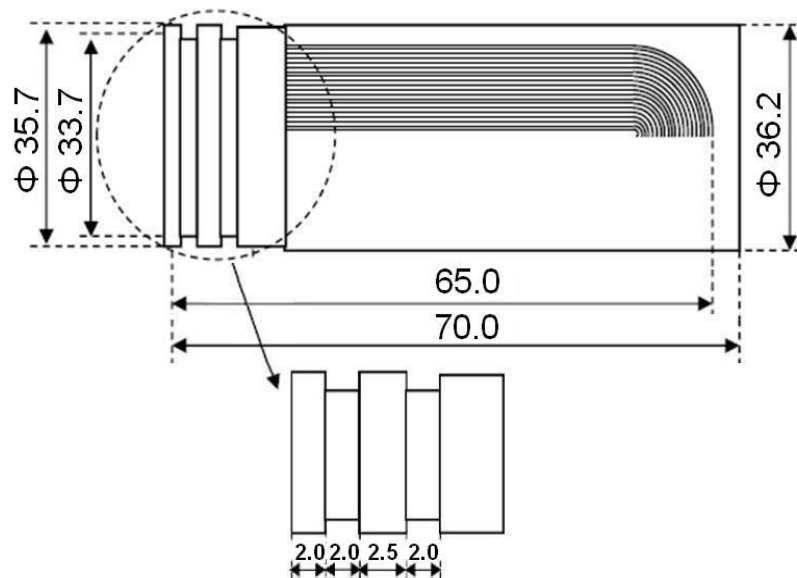
Model No	KO1516-E
Application	NATURAL PRESSURE



Category	Unit	Results	Remark
Main Material	-	Poly Sulfone	-
Initial Flux	cc/min	850	± 150
Surface area	m ²	0.15	± 0.01
Number of Fibers	Filas.	1,600	U-Type
Outer Diameter	μm	460	± 40
Inner Diameter	μm	300	± 40
Pore Size	μm	0.01~ 0.1	-
Lp (Liquid permeability)	cc/cm ² · min · (kg/cm ²)	40	± 5
Work Pressure	kg/cm ²	at Gravity	-

Specifications. & Analytic Results

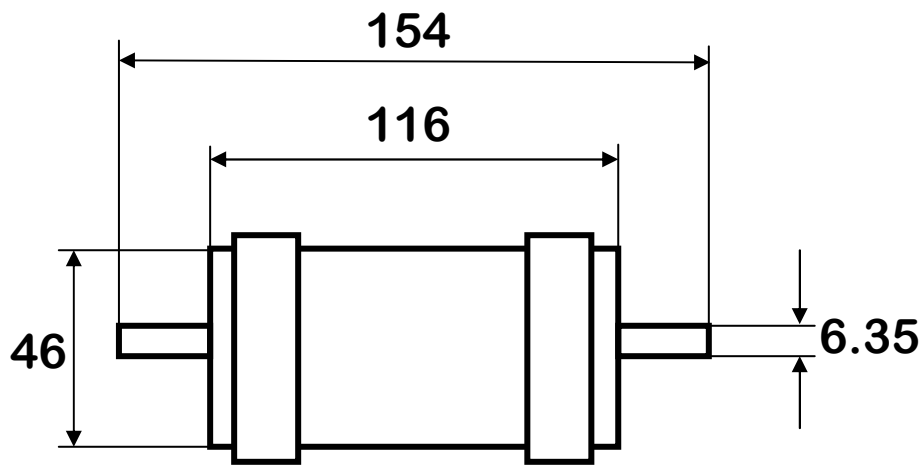
Model No	KO1512-E
Application	RO FINAL TREATMENT



Category	Unit	Results	Remark
Main Material	-	Poly Sulfone	-
Initial Flux	cc/min	1,800	± 300
Surface area	m ²	0.15	± 0.01
Number of Fibers	Filas.	1,200	U-Type
Outer Diameter	μm	590	± 40
Inner Diameter	μm	390	± 40
Pore Size	μm	0.01~ 0.1	-
Air Vent / Length	Filas. / mm	6 / 50	U-Type
Lp (Liquid permeability)	cc/cm ² • min • (kg/cm ²)	40	± 5
Work Pressure	kg/cm ²	< 4	± 0.5

Specifications. & Analytic Results

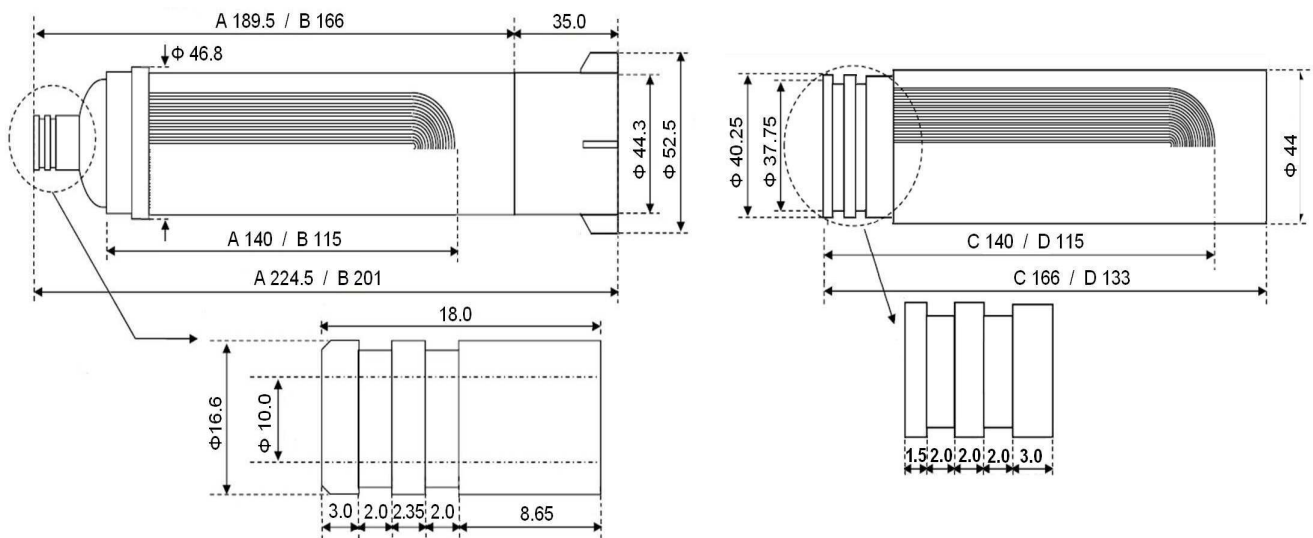
Model No	KO1512-H
Application	RO FINAL TREATMENT



Category	Unit	Results	Remark
Main Material	-	Poly Sulfone	-
Initial Flux	cc/min	1,800	± 300
Surface area	m ²	0.15	± 0.01
Number of Fibers	Filas.	1,200	U-Type
Outer Diameter	μm	590	± 40
Inner Diameter	μm	390	± 40
Pore Size	μm	0.01~ 0.1	-
Air Vent / Length	Filas. / mm	6 / 50	U-Type
Lp (Liquid permeability)	cc/cm ² • min • (kg/cm ²)	40	± 5
Work Pressure	kg/cm ²	< 4	± 0.5

Specifications. & Analytic Results

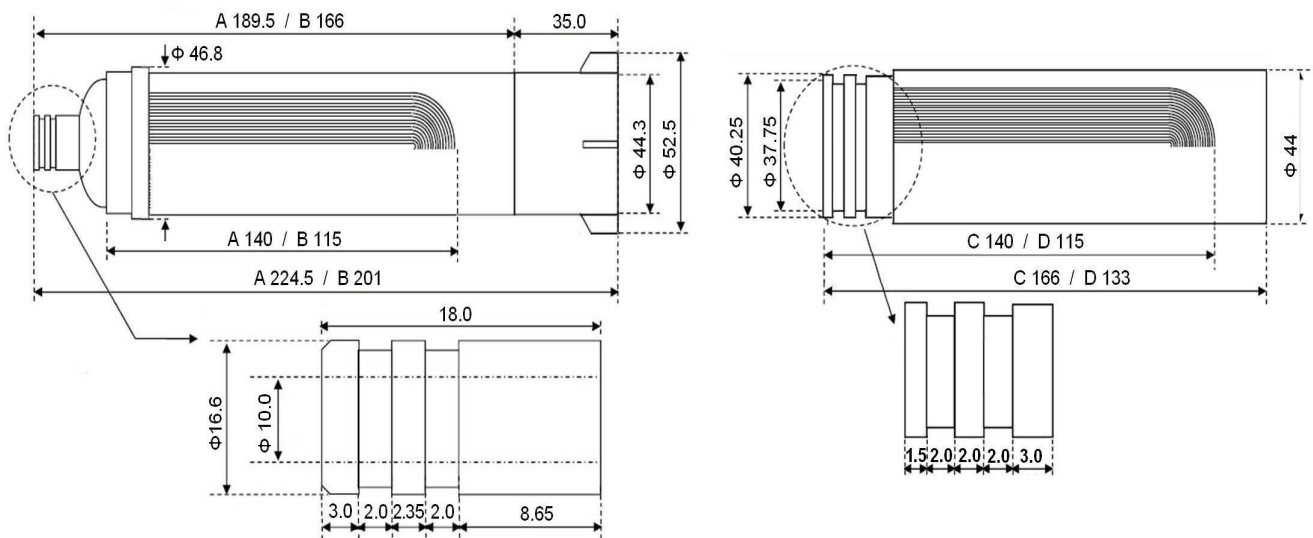
Model No	KO3014-A / B / C / D
Application	KOREAN STYLE FILTER



Category	Unit	Results	Remark
Main Material	-	Poly Sulfone	-
Initial Flux (at 1bar,3l/min)	cc/min	2,400	± 300
Surface area	m ²	0.3	± 0.01
Number of Fibers	Filas.	1,400	U-Type
Outer Diameter	μm	590	± 40
Inner Diameter	μm	390	± 40
Pore Size	μm	0.01~ 0.1	-
Air Vent / Length	Filas. / mm	6 / 50	U-Type
Lp (Liquid permeability)	cc/cm ² · min · (kg/cm ²)	40	± 5
Work Pressure	kg/cm ²	< 4	± 0.5

Specifications. & Analytic Results

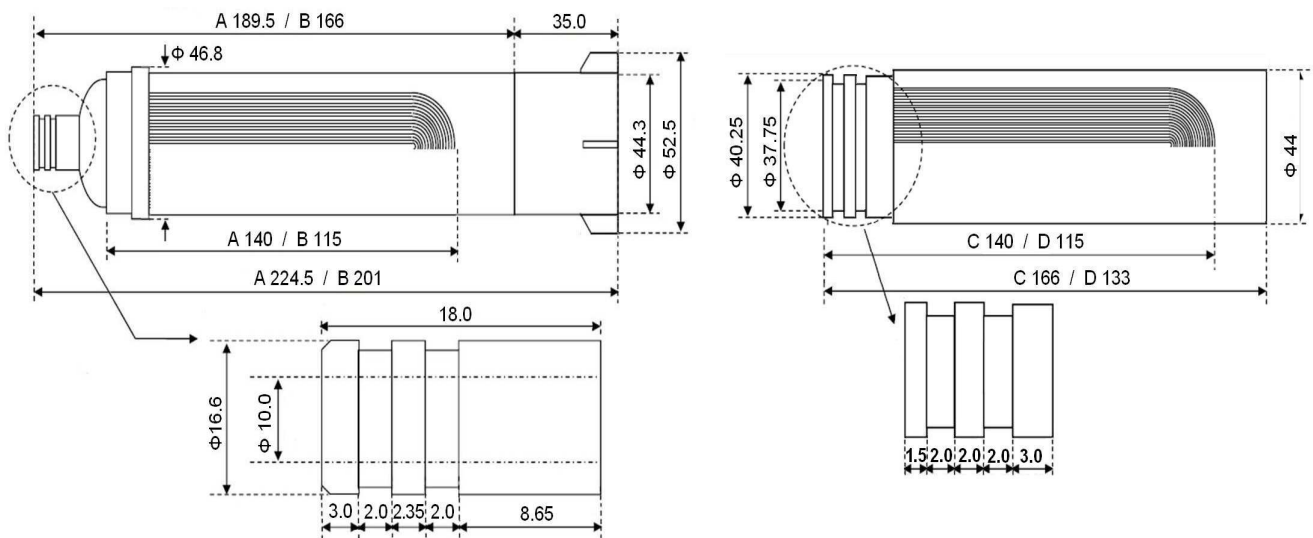
Model No	KO3818-A / B / C / D
Application	KOREAN STYLE FILTER



Category	Unit	Results	Remark
Main Material	-	Poly Sulfone	-
Initial Flux (at 1bar,3l/min)	cc/min	2,600	± 300
Surface area	m ²	0.38	± 0.01
Number of Fibers	Filas.	1,800	U-Type
Outer Diameter	μm	590	± 40
Inner Diameter	μm	390	± 40
Pore Size	μm	0.01~ 0.1	-
Air Vent / Length	Filas. / mm	6 / 50	U-Type
Lp (Liquid permeability)	cc/cm ² · min · (kg/cm ²)	40	± 5
Work Pressure	kg/cm ²	< 4	± 0.5

Specifications. & Analytic Results

Model No	KO4919-A / B / C / D
Application	KOREAN STYLE FILTER



Category	Unit	Results	Remark
Main Material	-	Poly Sulfone	-
Initial Flux (at 1bar,3l/min)	cc/min	2,800	± 300
Surface area	m ²	0.49	± 0.01
Number of Fibers	Filas.	1,900	U-Type
Outer Diameter	μm	590	± 40
Inner Diameter	μm	390	± 40
Pore Size	μm	0.01~ 0.1	-
Air Vent / Length	Filas. / mm	6 / 50	U-Type
Lp (Liquid permeability)	cc/cm ² · min · (kg/cm ²)	40	± 5
Work Pressure	kg/cm ²	< 4	± 0.5